

MS1026-x

一、summary

This product is the logic control, machine HMI integrates a high performance and low cost, 10 NPN type switch input, 8 way relay output, real-time clock (optional), text display, text all the function keys, and 6 extended function keys, PLC programming software support GX-Works2 and GX-Developer 8.86, text programming software support OP20-6.5z
features standard: 10 way NPN switch input, 8 relay output, RS485 (support MODBUS-RTU) communication

extended function : A: 2channel K/E/J Thermocouple Input

B: 8 relay output, 6 channel NPN switching input

C: 200K 4 axis high speed output (8 channel NPN transistor output)

D: 2 channel 24 bit high precision weighing input

E: 4 channel 0-10 V voltage (0-20mA current) input (can change NTC), 2

channel 0-10V voltage (0-20mA current) output, 5 channel PN switch input, 2 channel K/E/J Thermocouple Input

二、Basic configuration instructions

1、input: 10 channel NPN input (including 2 channel high speed input)

output: 8 relay output, maximum current 5A

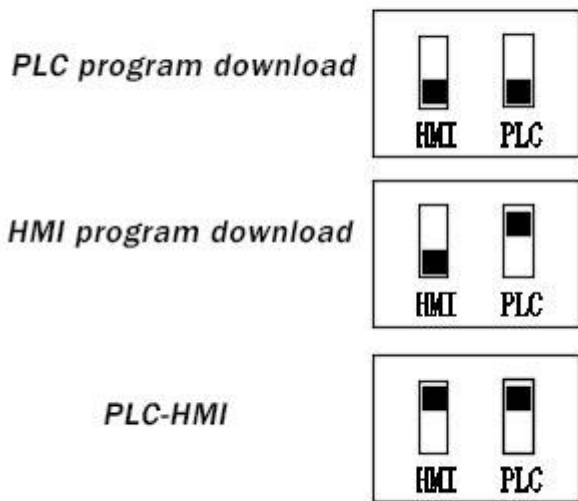
2、19264 lcd display

3、All function keys of text;

4、6 extended function keys: F1-F6, respectively, occupy PLC input port X030-X035;

三、Use

1、Program download code switch configuration:

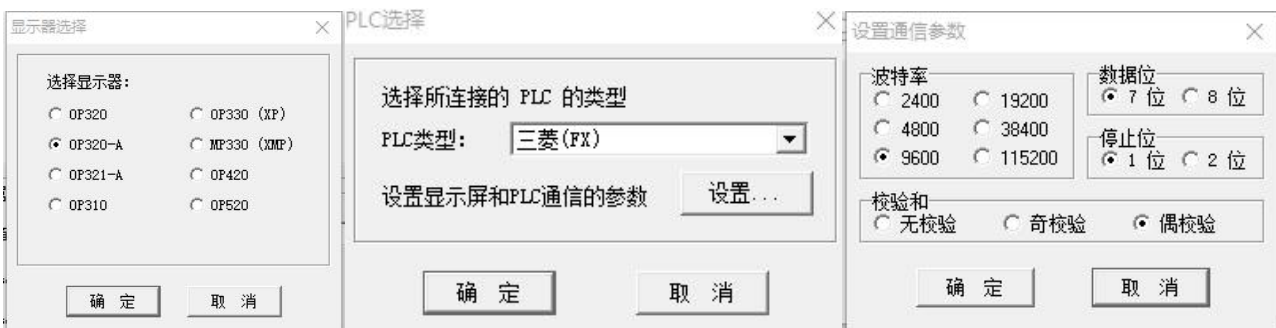


2、Programming and downloading

2.1 Please refer to MITSUBISHI PLC FX programming manual for the preparation of PLC program

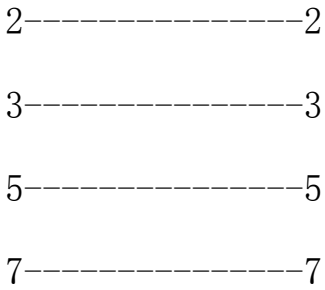
2.2 Text display program, please refer to the OP320-A programming manual

2.3 Text screen type and communication protocol selection type OP320-A protocol MITSUBISHI FX



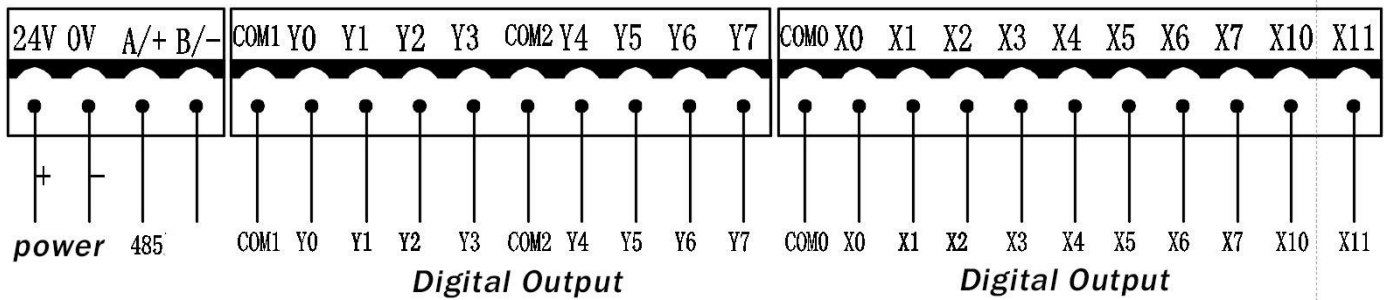
2.4 Download line connection mode

232-DB9



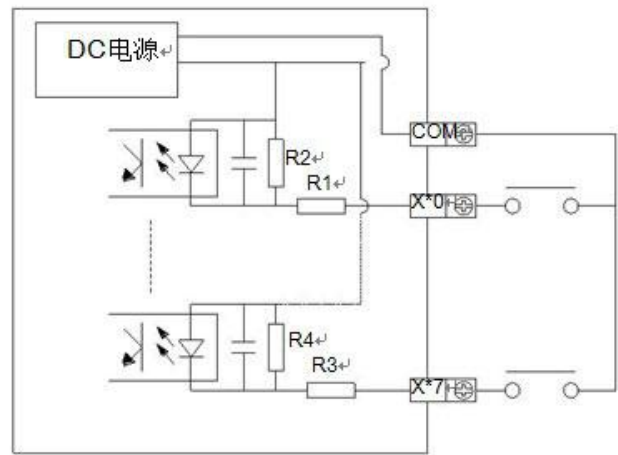
3、mode of connection

3.1 Schematic diagram of connection terminal



3.2 Input unit wiring

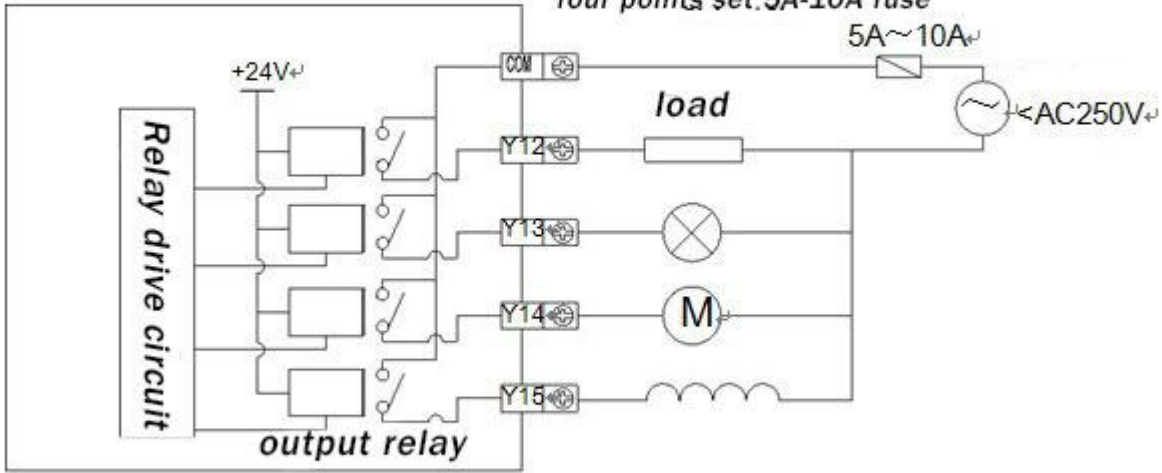
Input signal voltage	DC24V±10%
Input signal current	7mA/DC24V
Input ON current	4.5mA 以上
Input the OFF current	1.5mA 以下
Enter the response time	约 10ms
Input signal form	Contact input or NPN open collector transistor
Circuit insulation	Optocoupler insulation
Enter the action display	The LED lights when ON is ON



3.3 Output unit connection

3.3.1 Relay output type (R)

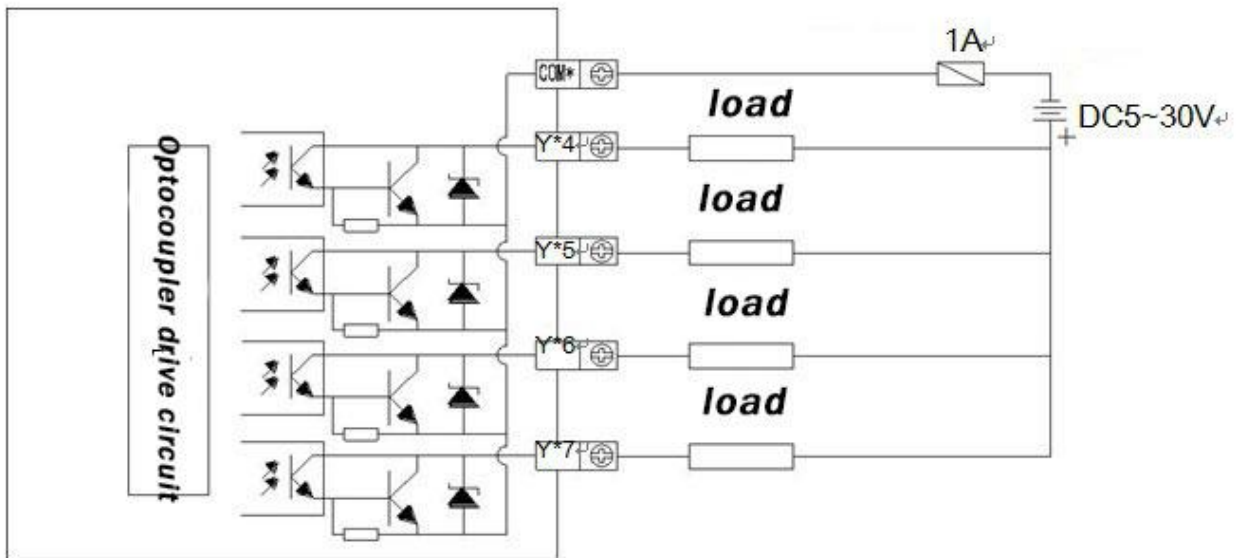
To prevent the load short circuit and other problems burned plc substrate wiring, every four points set.5A-10A fuse



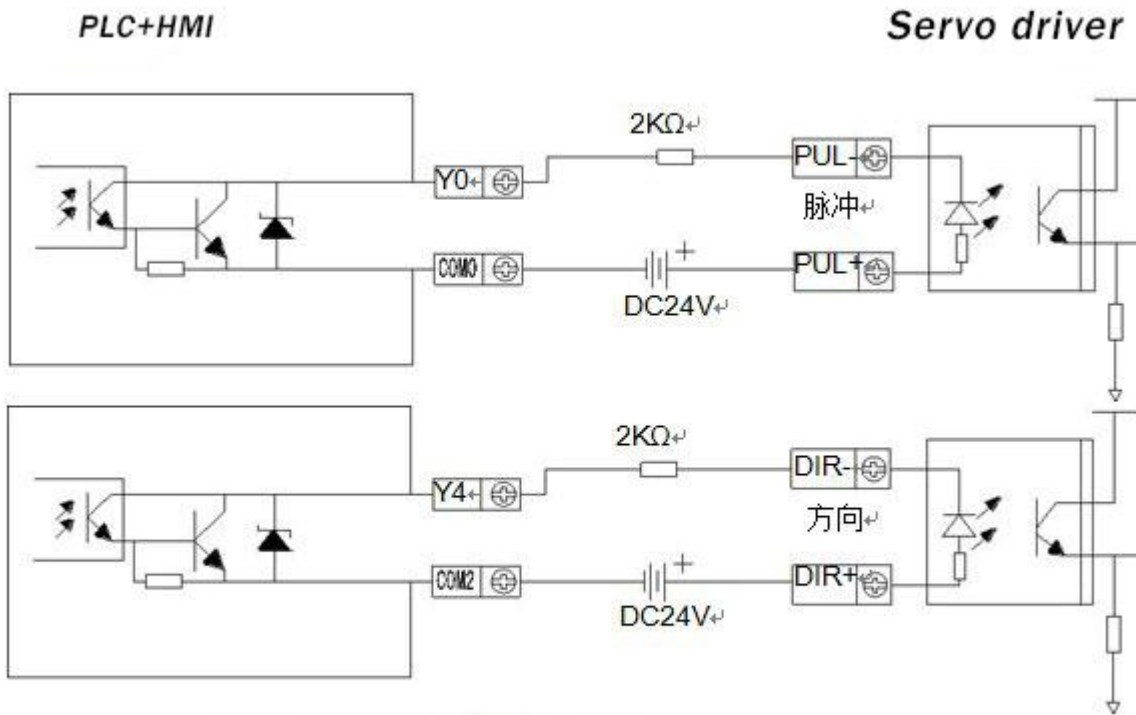
T-type no relay output, do not connect 220v

3.3.2 Transistor output type (T)

In order to prevent the load short circuit and other failure to burn out the output unit, burn the programmable controller substrate wiring, please use the appropriate load insurance



3.3.3 High speed output mode (T)



Ensure the reliable input current of the optocoupler input 8-15mA

四、Questions

1 The program cannot be downloaded

1.1 Check whether the dial switch combination is correct

1.2 Direct serial download program: change the computer or download a serial port.

1.3 Download through the USB program: when the PLC program can be downloaded into, and the text screen is not downloaded, try:

(1) Change desktop computer, use direct serial port to download program;

1.4 Software serial port setting: Open the OP editing software, 点Click the file menu - select the communication port", Set up the communication port of the PC machine

