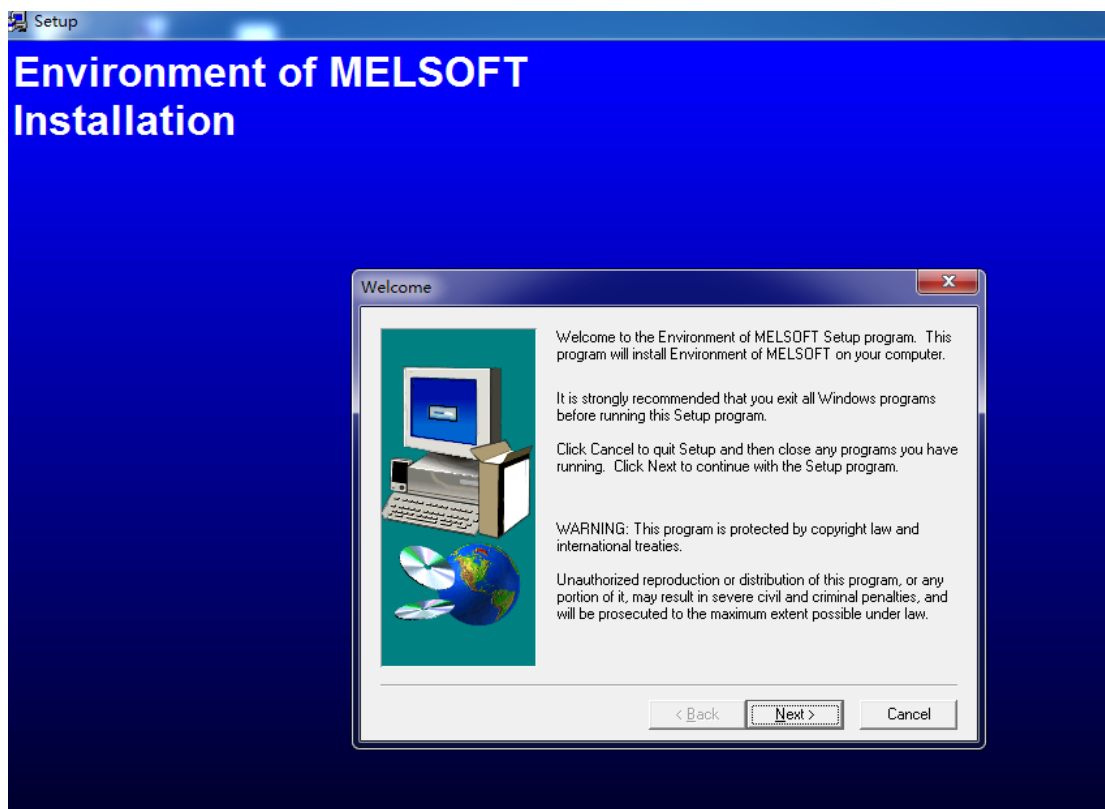
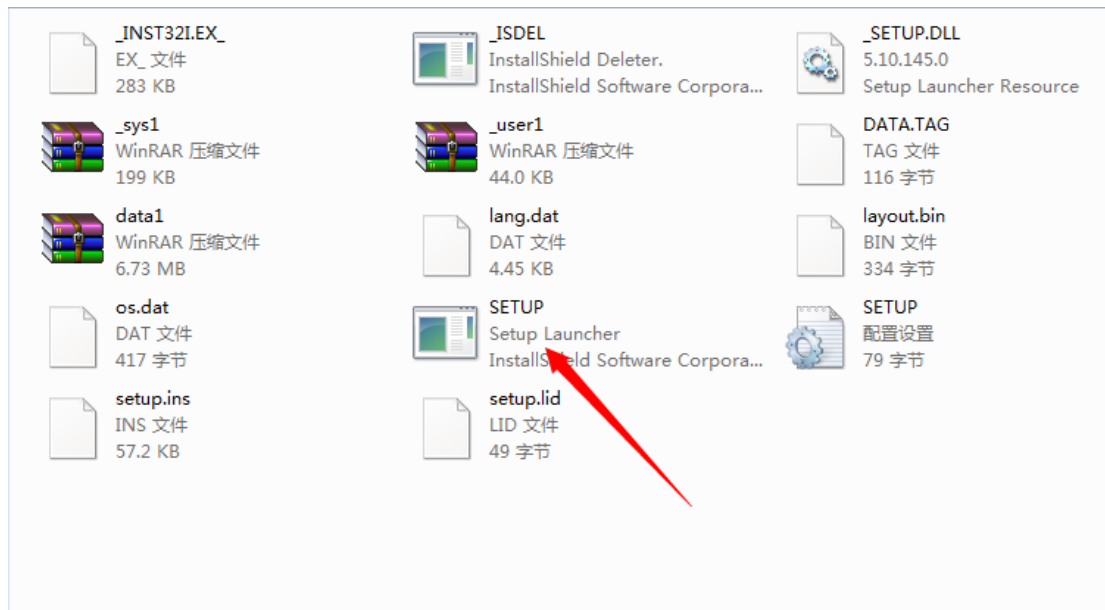


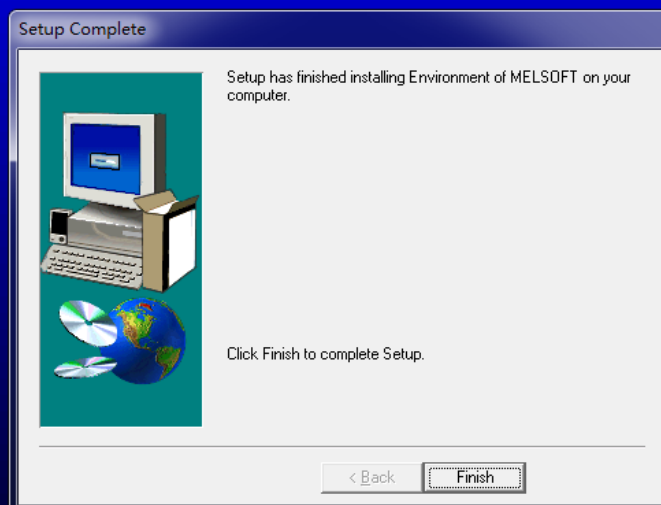
1. open GX Developer-8.50C-E/EnvMEL , click setup.exe



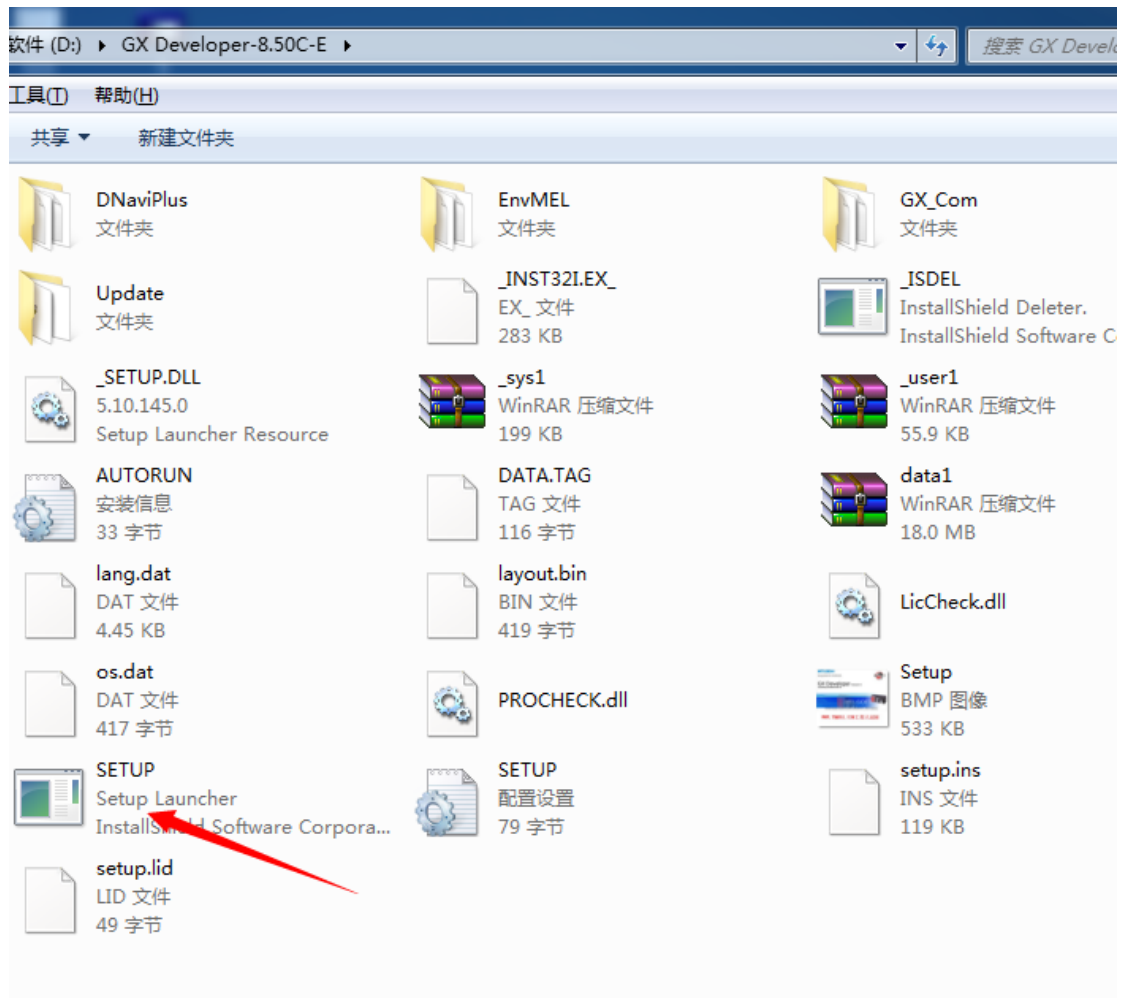
## Environment of MELSOFT Installation



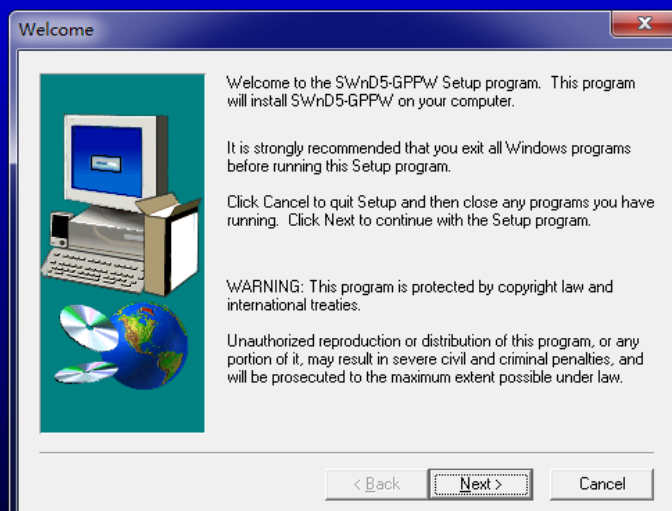
## Environment of MELSOFT Installation



2. open GX Developer-8.50C-E , click setup.exe




## GX Developer Version 8 Installation



# GX Developer Version 8 Installation

User Information

Type your name below. You must also type the name of the company you work for.



Name:


Company:

< Back   Next >   Cancel

# GX Developer Version 8 Installation

Input ProductID

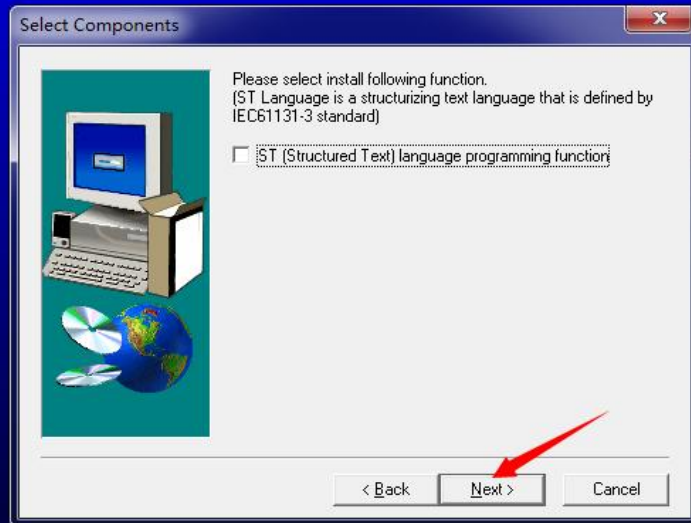
Please enter the product ID of the product.  
Please input in single byte English characters.



.

< Back   Next >   Cancel

# GX Developer Version 8 Installation



Setup

# GX Developer Version 8 Installation

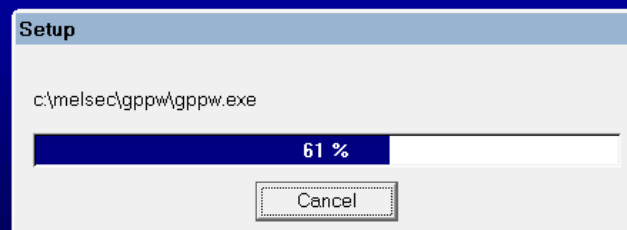


# GX Developer Version 8 Installation



Next

# GX Developer Version 8 Installation



Over.

